

## West Gippsland CMA region

Key bore data has been selected across the West Gippsland Catchment Management Authority area as representative of groundwater levels, behaviour and trends.

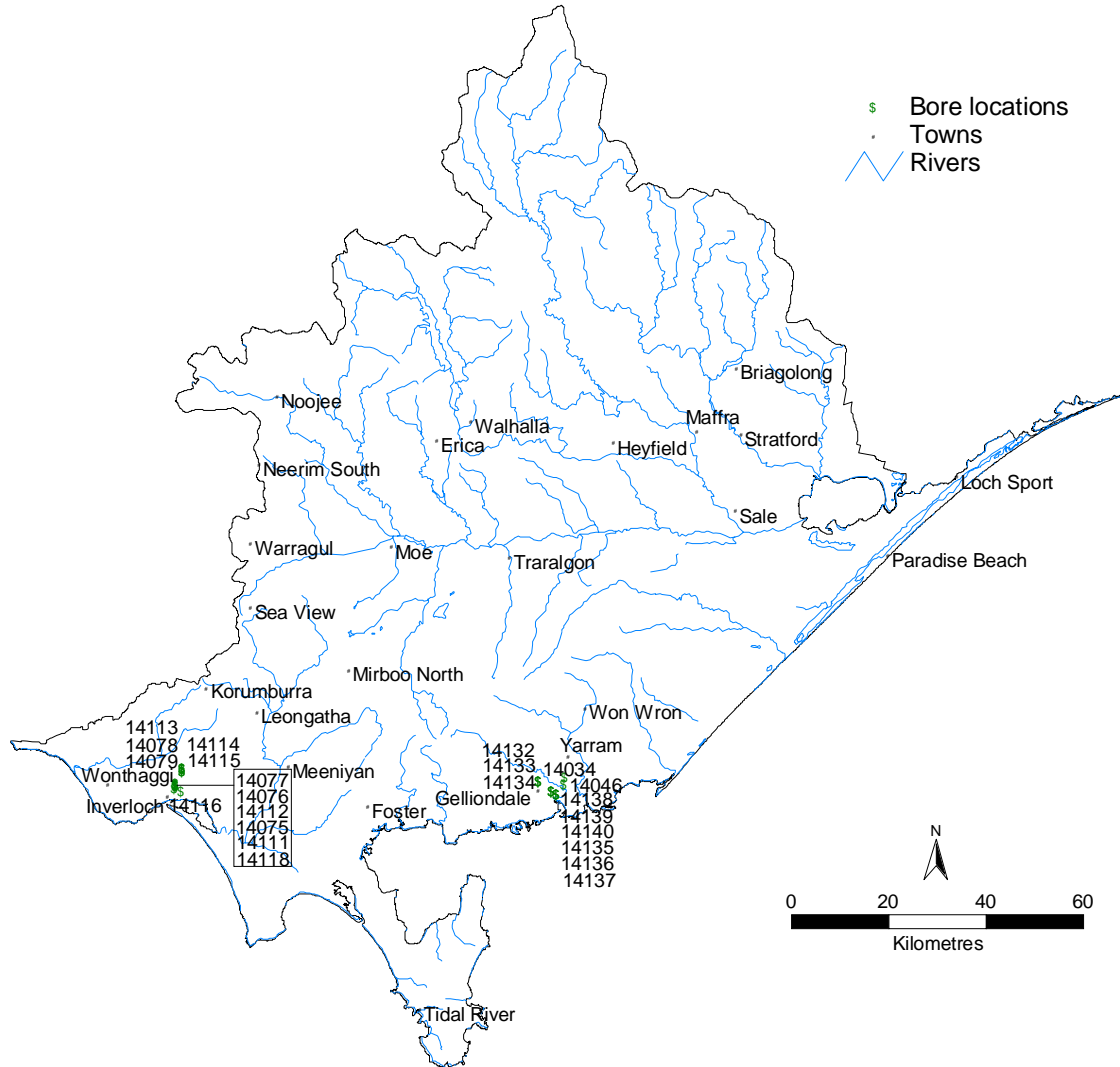


Figure 25 Map of key bores within the West Gippsland CMA region.

### Groundwater behaviour

Groundwater levels within the West Gippsland CMA remain reasonably static or slightly falling with the majority of monitoring bores indicating groundwater levels are stable. Whilst levels are reduced in the upper landscape (bores 14034) at discharge sites (bores 14140 and 14079) the majority remain within 2 – 3 metres of ground surface. Drought conditions during the period 2003 to 2006 have resulted in some reduction in groundwater levels, dependant of on the position of the monitoring bore within the landscape.

## Bore data

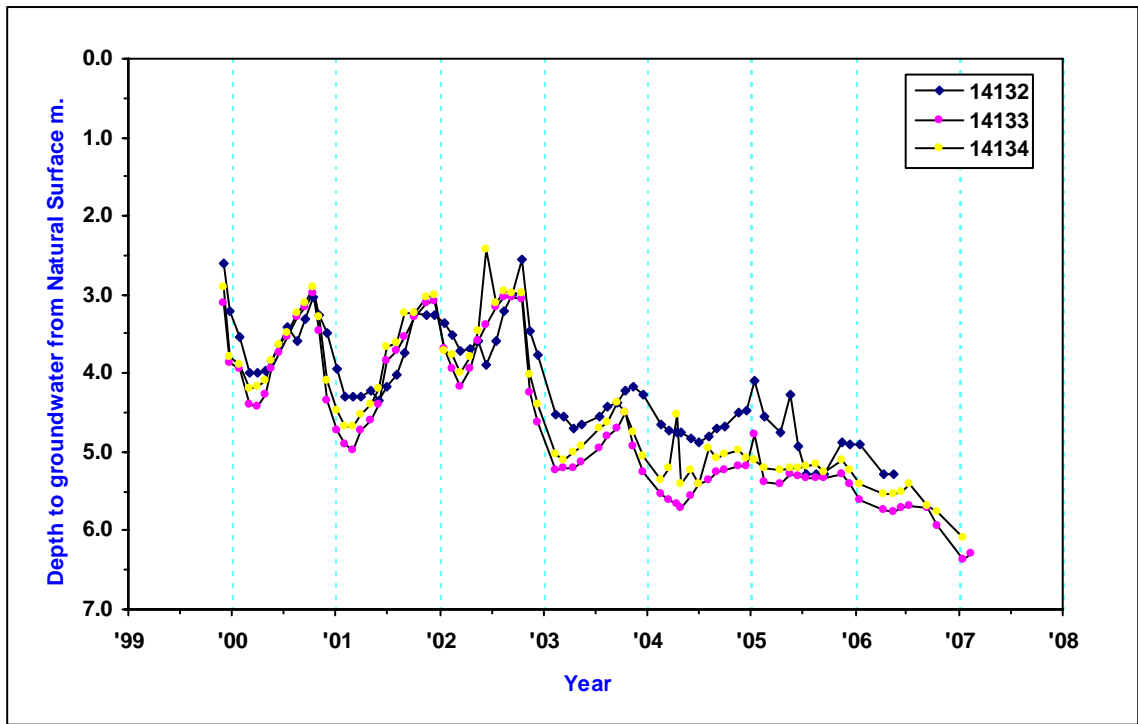
Table 9 Bore details

Bore Id	Total Depth	Screen Depth From	Screen Depth To	Landscape Position
14113	3.2	nr	nr	nr
14078	8.9	6	8	nr
14079	8.9	6	8	nr
14114	3.2	nr	nr	nr
14115	3.2	nr	nr	nr
14116	3.2	nr	nr	nr
14075	7.4	4.5	6.5	nr
14076	7.4	4.5	6.5	nr
14077	9.7	8	10	nr
14111	3.2	nr	nr	nr
14112	3.2	nr	nr	nr
14118	3.2	nr	nr	nr
14132	5.28	nr	nr	nr
14133	9.83	nr	nr	nr
14134	19.37	nr	nr	nr
14034	11	nr	nr	nr
14046	10.5	nr	nr	nr
14138	5.76	nr	nr	nr
14139	9.47	nr	nr	nr
14140	23.2	nr	nr	nr
14135	4.7	nr	nr	nr
14136	10.5	nr	nr	nr
14137	17.9	nr	nr	nr

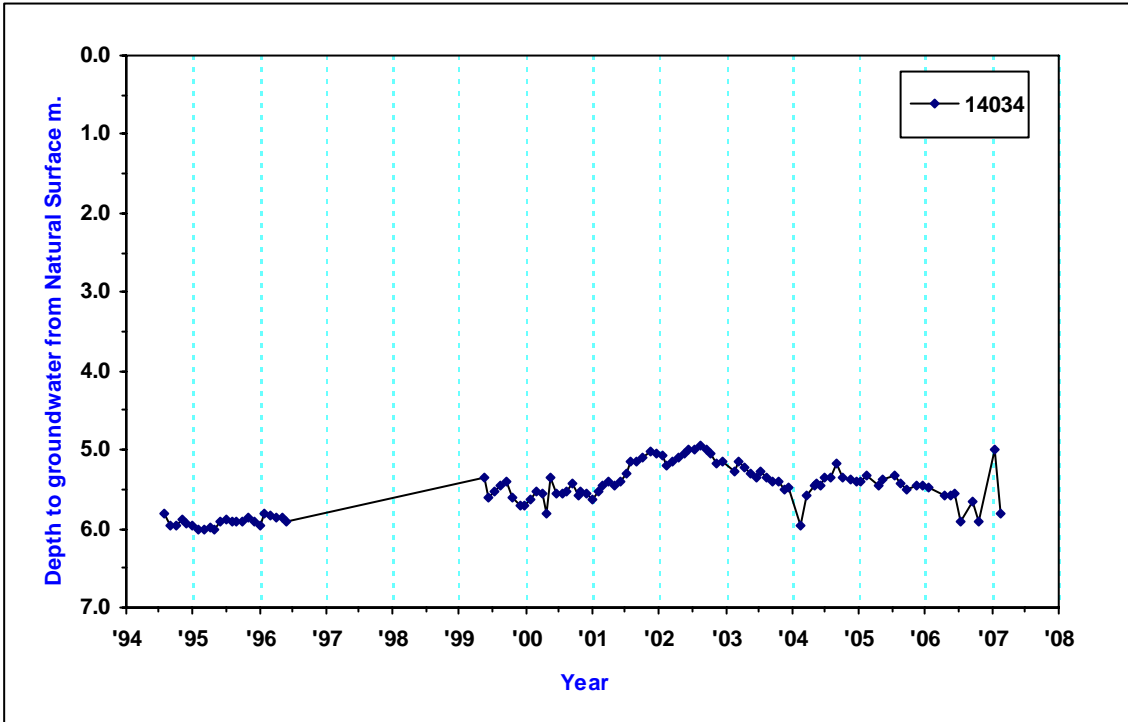
\* nr = not recorded

### Bore hydrographs

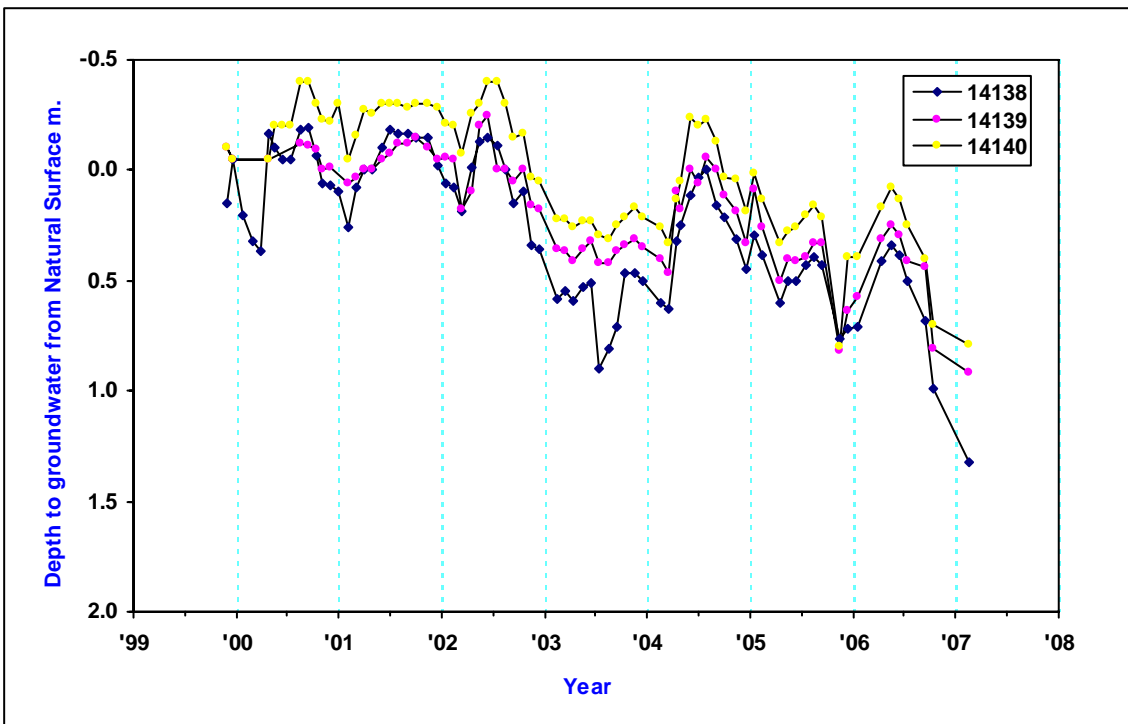
The hydrographs that are provided below are plots of the unedited depth to groundwater as measured in the key monitoring bores and plotted as depth below natural surface (ground level). A brief interpretation is provided of each hydrograph in an attempt explain the groundwater behaviour at the bore site.



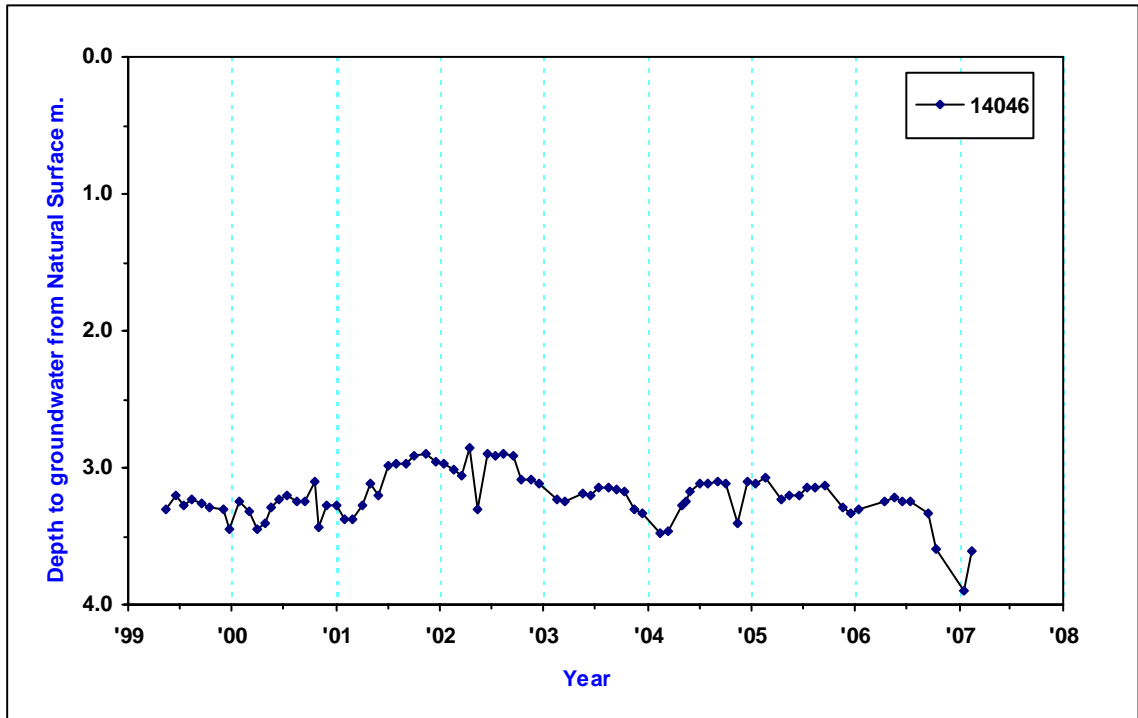
Bores 14132, 14133 and 14134



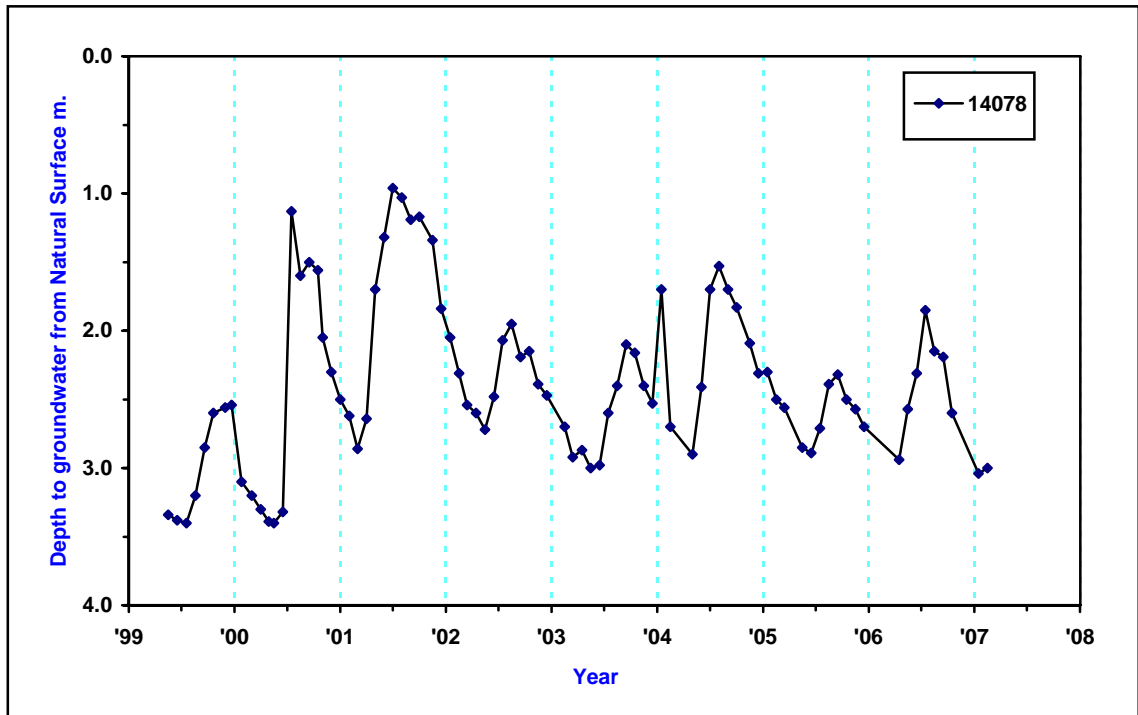
Bore 14034 slight upward trend until 2003 then downward trend subdued behaviour



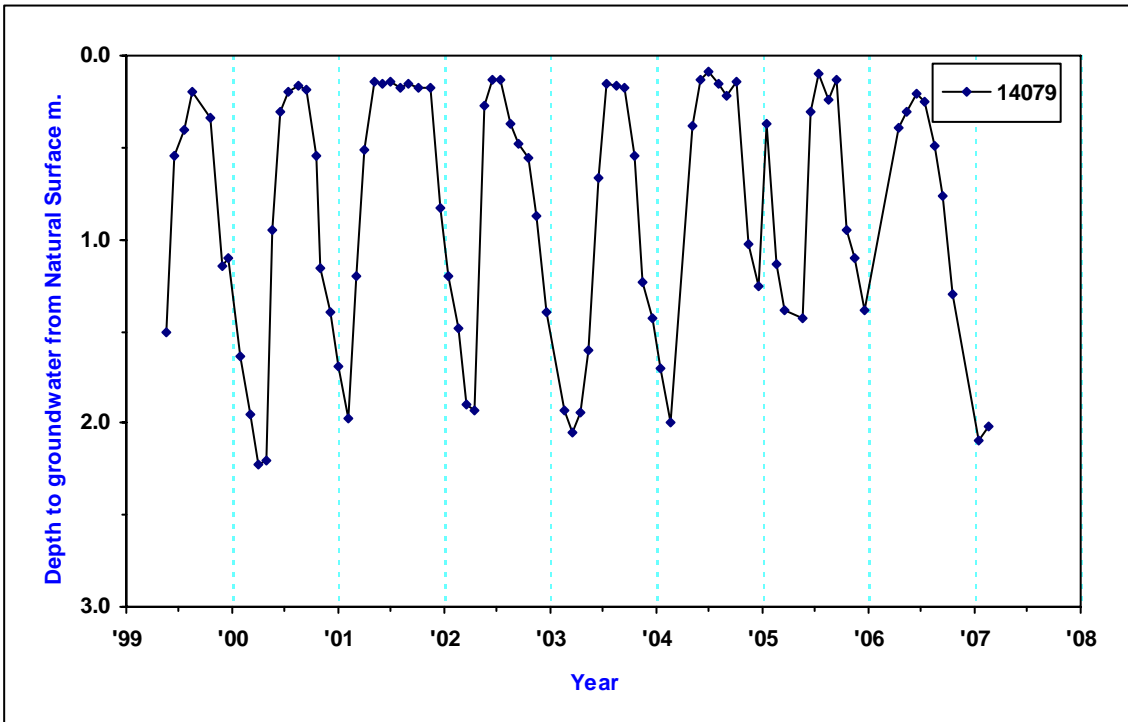
Bores 14138, 14139 and 14140



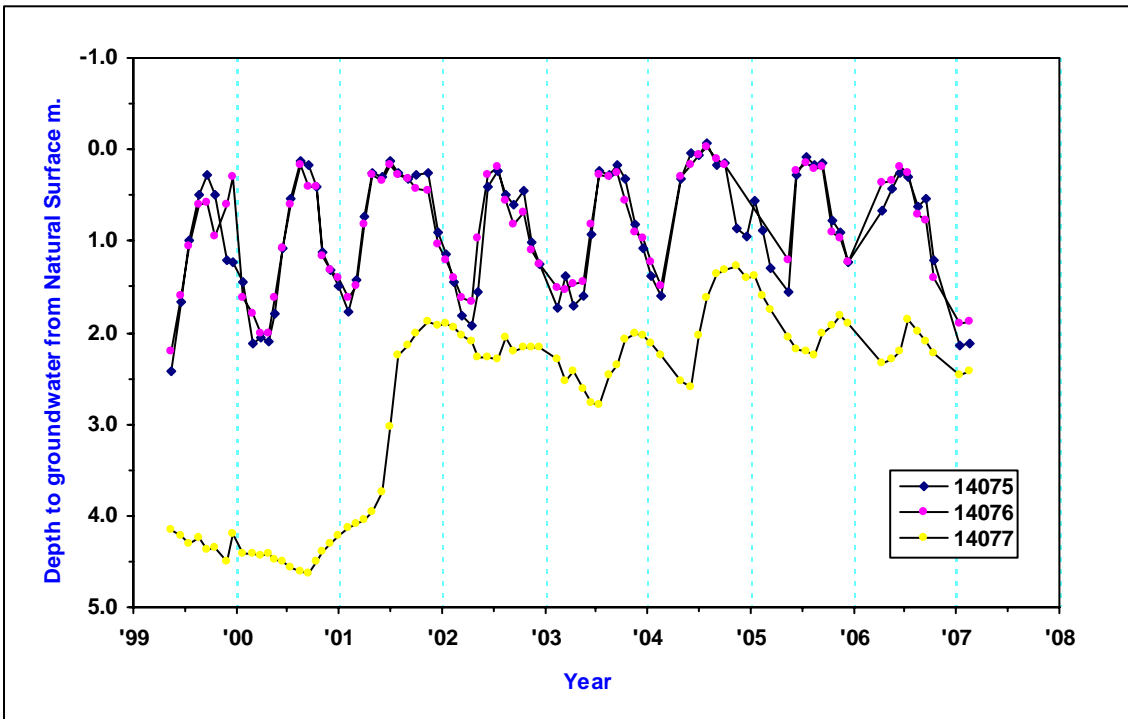
Bore 14046, stable trend, subdued behaviour



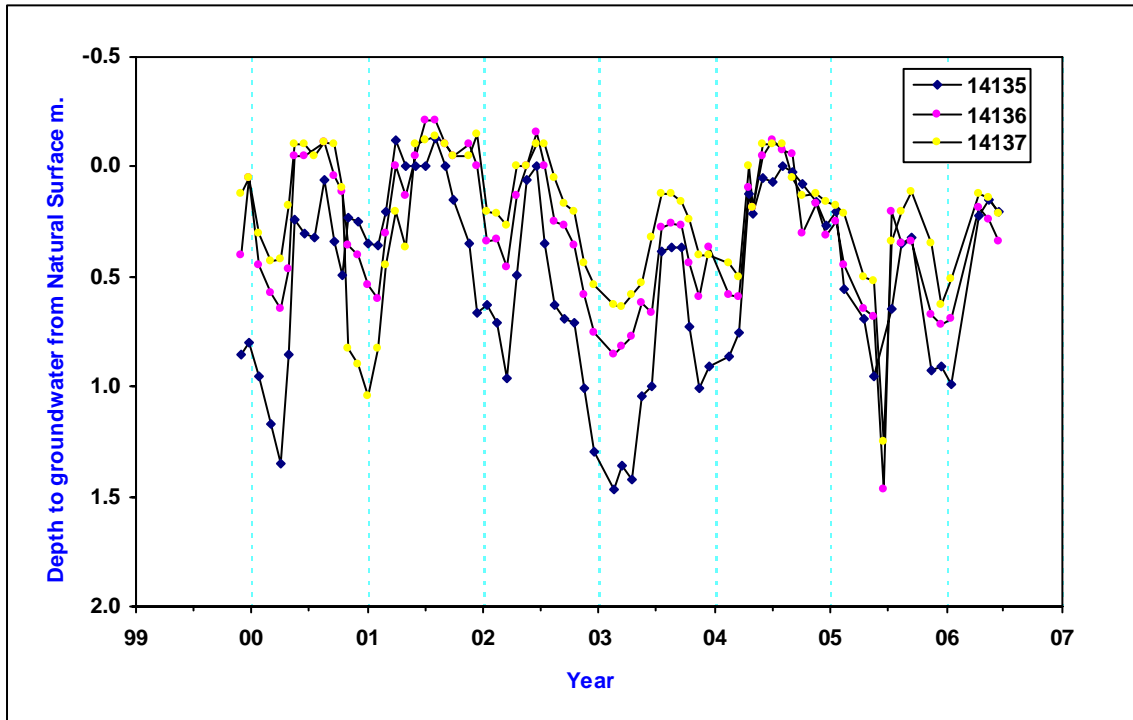
Bore 14078, overall upward trend with strong seasonal behaviour



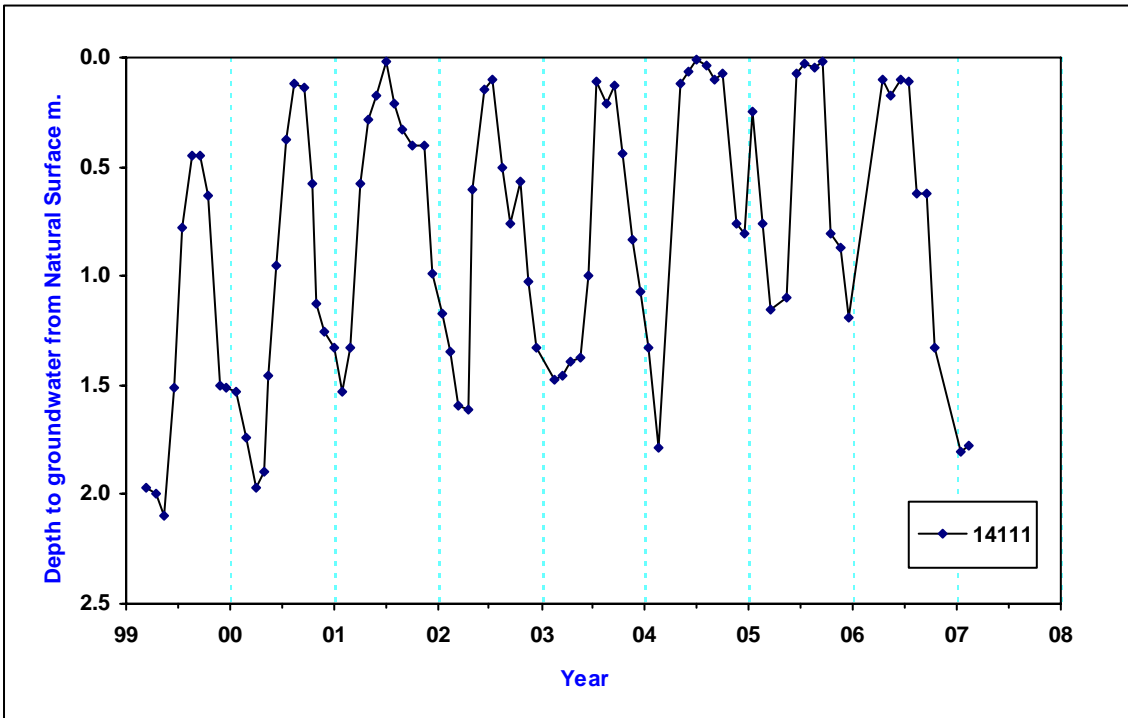
Bore 14079, overall stable trend with strong seasonal behaviour



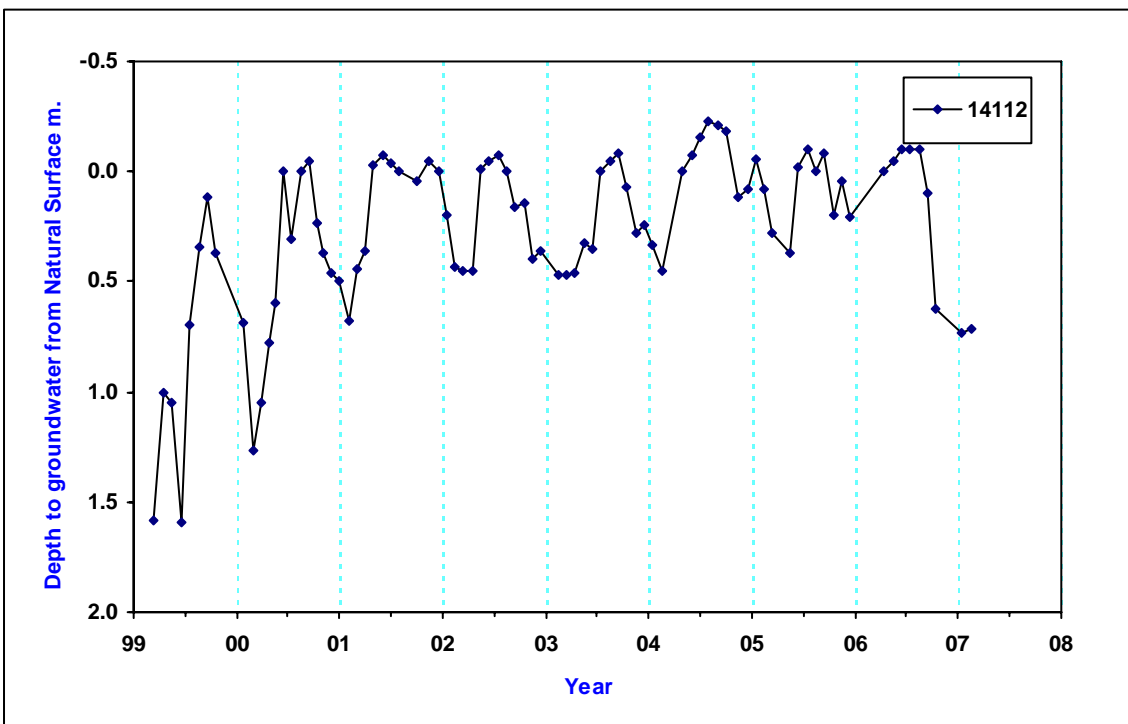
Bores 14075, 14076 and 14077, nested bore site with slight upward trend and strong seasonal behaviour



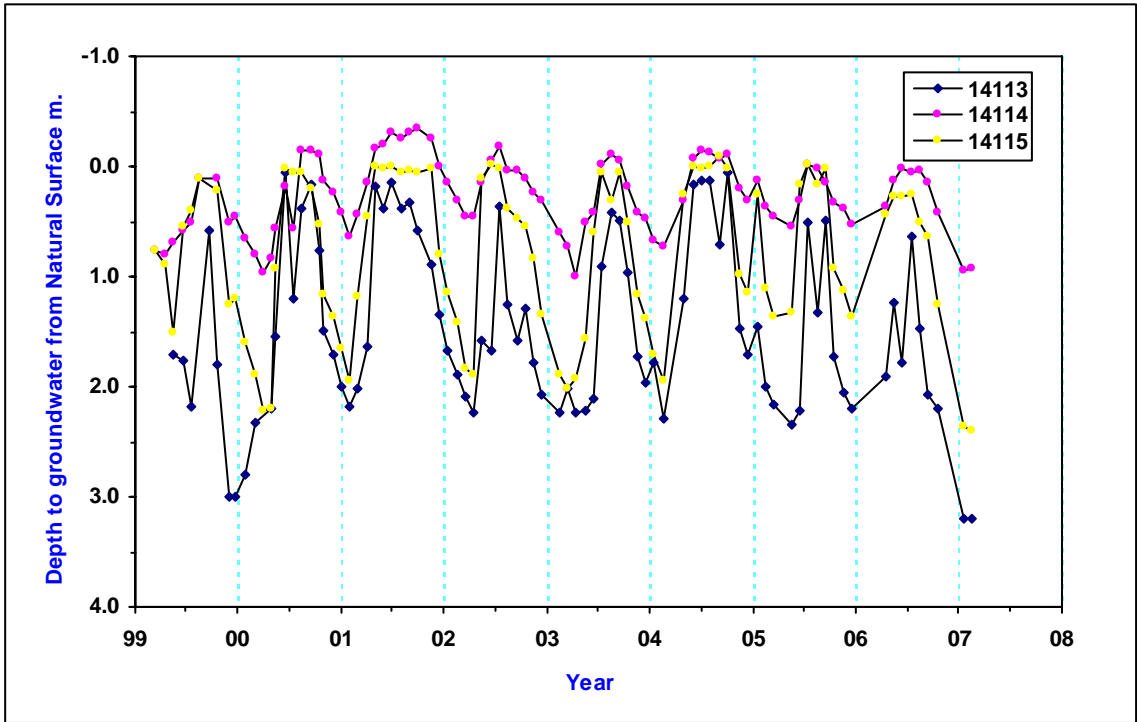
Bores 14135, 14136 and 14137 nested bore site with slight upward trend and strong seasonal behaviour



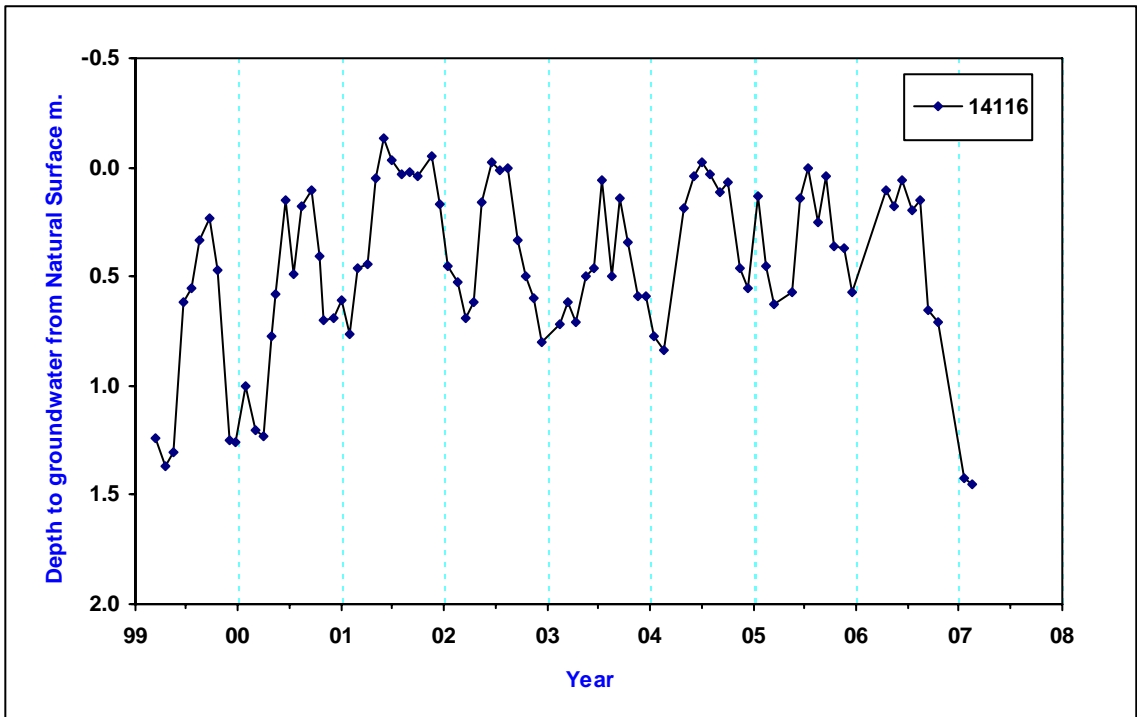
Bore 14111, overall upward trend with strong seasonal behaviour



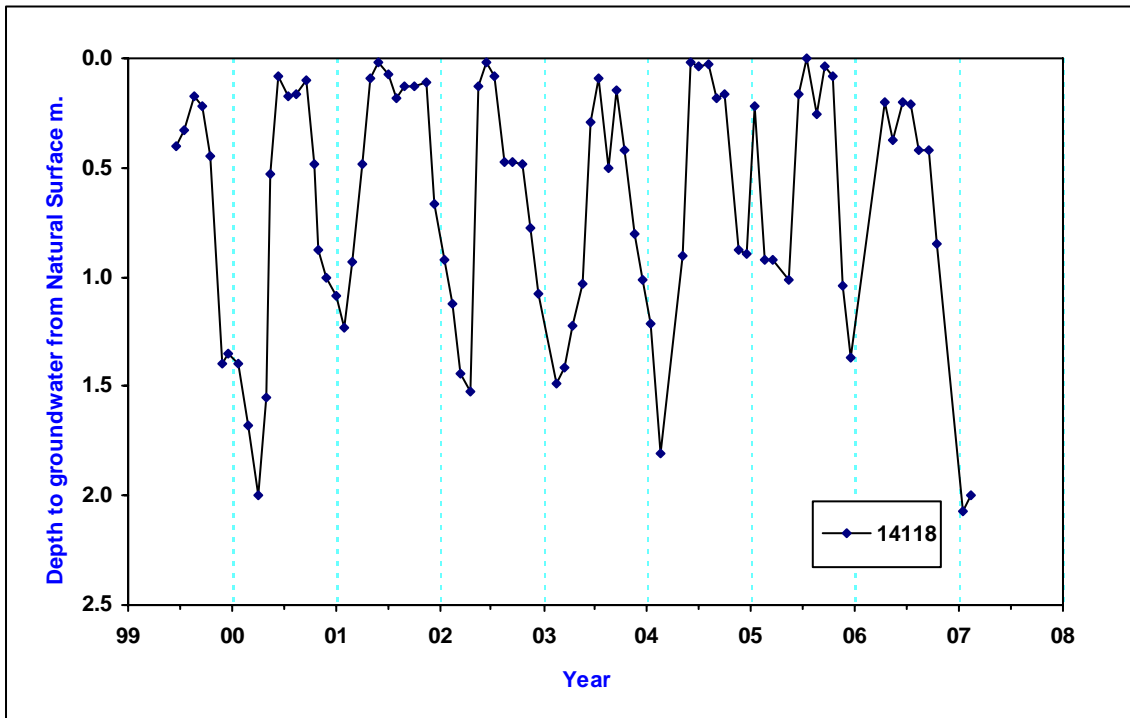
Bore 14112, overall upward trend with strong seasonal behaviour



Bores 14113, 14114 and 14115



Bore 14116,



Bore 14118, overall stable trend with strong seasonal behaviour