

## Movement conditions from the Ascot Vale Fruit Fly Restricted Zone for the nursery industry

An outbreak of Queensland Fruit Fly has been declared in Ascot Vale. A **1.5km outbreak area** and a **15 km restricted zone** (see maps overleaf) have been implemented to control the movement of fruit fly host material. This has implications for nurseries within the restricted zone.

Due to the outbreak, the following conditions are being applied for **host plants with fruit attached** moving through and out of the zone:

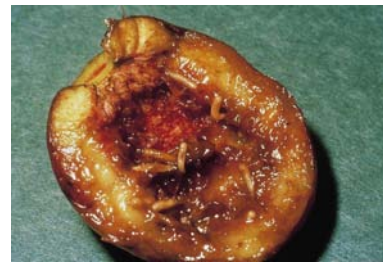
- 1 Host plants from a production/ wholesale nursery can only be moved from the 15km restricted zone under a permit issued by DPI.**
- 2 Host plants from retail or wholesale/ production nurseries within the 1.5km outbreak area can only be moved from the outbreak area if the business is accredited by DPI to monitor and treat plants for fruit fly.**  
Contact DPI Plant Standards on 8371 3500 for further information.
- 3 Host plants from retail or wholesale businesses outside of the 1.5km outbreak area can be freely moved from the 15km restricted zone.**

**4 Anyone wishing to move host plants interstate or into the Greater Sunraysia Pest Free Area should contact DPI Plant Standards on 8371 3500.**

**5 Transit of host plants through the 15km restricted zone is permitted provided that the transit is continuous.**

### Please note:

- These conditions apply to host plants **with fruit attached** - flowers are permitted as they are not susceptible to fruit fly infestation.
- Host plants which may be subject to these conditions include ornamental chillies and potted fruits such as strawberries, lemons, cumquats and tomatoes. A list of Queensland fruit fly hosts can be found on the DPI website at [www.dpi.vic.gov.au/psb](http://www.dpi.vic.gov.au/psb)
- More information on the Greater Sunraysia Pest Free Area can be found by visiting [www.pestfreearea.com.au](http://www.pestfreearea.com.au)

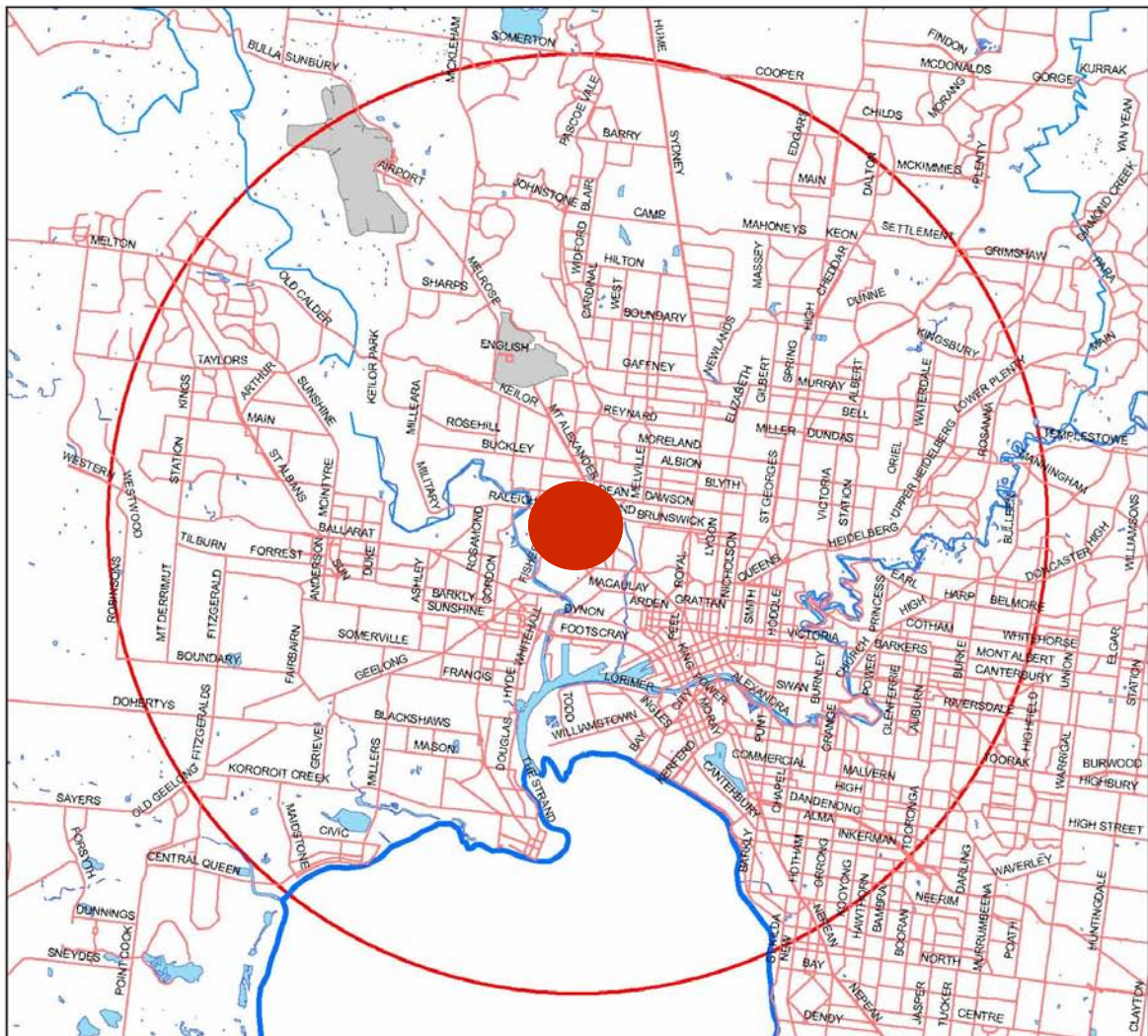


Left: Adult Queensland fruit flies (QFF); Centre: QFF larvae (maggots); Right: A nectarine infested with QFF larvae.

**Please check with DPI Plant Standards at the Melbourne Market (03 83713500) if you are unsure of movement conditions.**



Ascot Vale 1.5km outbreak area (bound by red circle)



Ascot Vale 1.5km outbreak area (red spot) and 15km restricted zone (bound by red circle)