



Understanding EBL Herd Statuses

Sally Ridge, Attwood

Updated: May 2007

AG1178

ISSN 1329-8062

Enzootic Bovine Leucosis (EBL) is a viral disease of cattle. In order to protect Australia's international export trade in cattle, milk and dairy products, governments and the dairy industry across Australia are co-operating to eradicate EBL. As herds progress through the screening and testing program they are allocated a status. It is important that producers understand what their herd status represents so that they can protect and enhance the position of their herd.

The Victorian EBL eradication program conforms to a set of national guidelines known as the Standard Definitions and Rules (SDRs) for EBL. The SDRs include the attached chart showing how dairy herds undergo bulk milk testing and/or individual animal testing to move from being initially unassessed to becoming officially free of EBL.

Non Assessed (NA)

A Non-Assessed herd is one that has not had a herd test or any bulk milk testing.

Bulk Milk Test Negative (BMN)

A Non-Assessed herd becomes Bulk Milk Test negative after one year of bulk milk testing with negative results.

Suspect (SU)

A suspect herd is one in which the Chief Veterinary Officer (CVO) determines there is sufficient evidence to suspect the presence of EBL, such as:

- A herd that has returned an equivocal bulk milk test and has not undergone a herd test; or
- A herd that has received animals from an infected herd(s); or
- A herd that has supplied an infected animal to another herd; or
- A herd that contains calves fed unpasteurised milk from an infected herd; or
- A herd that contains one or more animals with clinical signs consistent with EBL infection that remain unresolved; or
- A herd in which eradication of EBL has been attempted in the past, but not under an approved property disease eradication program or where the program has not been completed in accordance with the SDRs.

Suspect status can be resolved by the CVO obtaining evidence to remove the suspicion of infection from the herd. One or more herd tests may be a necessary component of the process to remove suspicion.

Provisionally Clear (PC)

The SDRs state that an infected herd becomes Provisionally Clear when it has a negative herd test at least 4 months after all known infected animals are removed from the herd

Monitored Free (MF)

A Bulk Milk Test Negative herd can become Monitored Free by:

- having one year of bulk milk testing with negative test results followed by a negative test of all eligible animals which have not contributed milk to any of the bulk milk tests; or,
- having four consecutive years of bulk milk testing with negative results.

A Non-Assessed herd can become Monitored Free by achieving a negative herd test with all the cattle over 6 months of age tested individually.

A Provisionally Clear herd can become Monitored Free by achieving a negative herd test at least 4 months after reaching Provisionally Clear status.

Infected (IN)

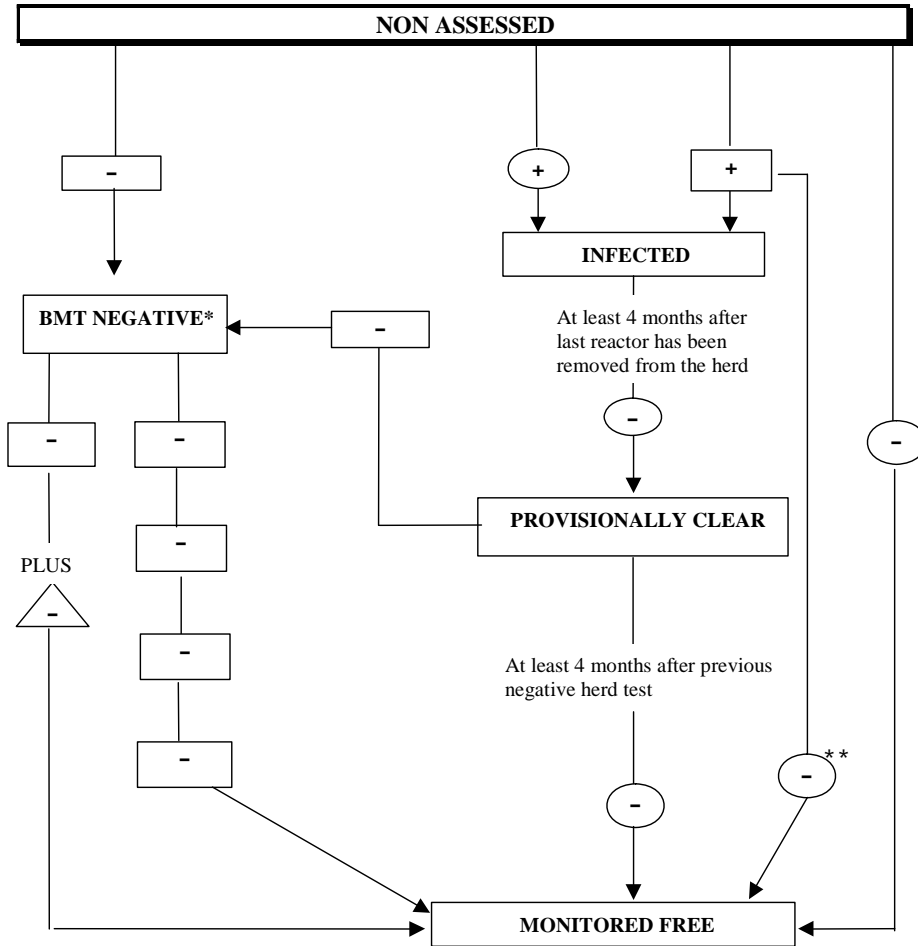
A herd in which one or more infected animals have been detected by individual animal tests or at the latest herd test, or a herd that has returned a positive bulk milk test result and which has not undertaken a herd test.

For more information contact your local DPI Animal Health staff or your veterinarian.

The previous version of this Information Note was published in February 2006.

The advice provided in this publication is intended as a source of information only. Always read the label before using any of the products mentioned. The State of Victoria and its employees do not guarantee that the publication is without flaw of any kind or is wholly appropriate for your particular purposes and therefore disclaims all liability for any error, loss or other consequence which may arise from you relying on any information in this publication.

EBL HERD STATUS



LEGEND

***A reactor at any test automatically results in an INFECTED status**

- Negative Bulk Milk TestingYear
- + Positive Bulk Milk Test
- Negative Herd Test
- + Positive Herd Test
- △
- Individual negative test of all eligible animals not contributing to any previous Bulk Milk Test in that year.

****** Progression to MF status can only occur where all cattle that contributed to the positive BMT are included in the herd test. Where this is not the case, a negative herd test will result in a status of Provisionally Clear.