

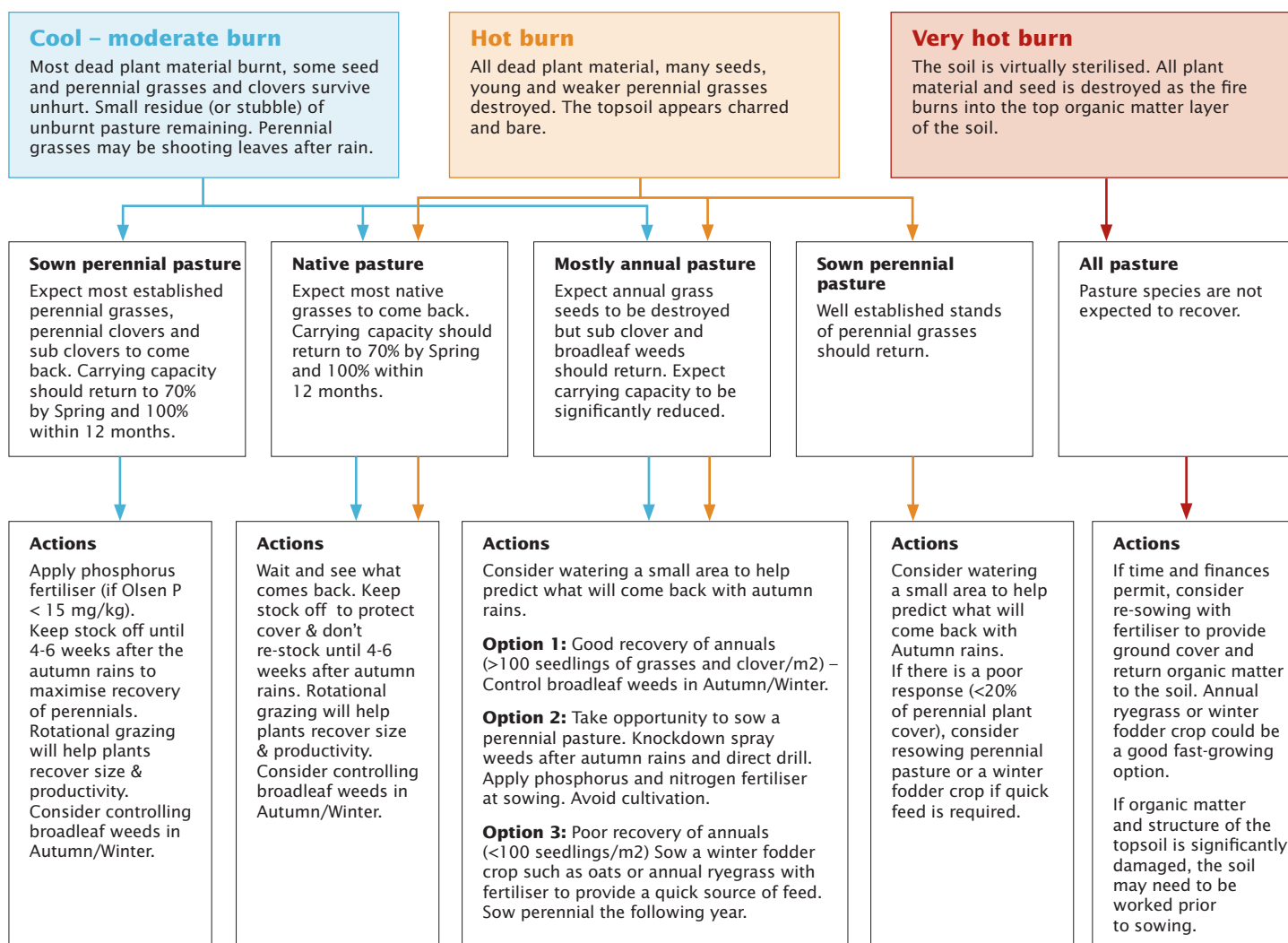
# Pasture recovery after fire

Kate Sargeant, DPI, Seymour

April 2009



## Decision Flow Chart For Pasture Recovery After Fire



## Images of pasture recovery after fire with different burn intensities on perennial-based pastures



Cool-moderate burn – pasture is charred, but not completely blackened. Recent rains have initiated recovery of perennials.



Close-up view of perennial plant effected by a hot burn. All dead material is burnt, perennial plant is blackened.



Perennial plant recovering from a hot burn.



Very hot burn – no plant material visible, earth has a blackened, charred appearance.

Published by the Department of Primary Industries,  
1 Spring Street, Melbourne, Victoria 3000 Australia  
April 2009

© The State of Victoria, 2009

This publication is copyright. No part may be reproduced by any process  
except in accordance with the provisions of the *Copyright Act 1968*.

Authorised by the Victorian Government,  
1 Spring Street, Melbourne, Victoria 3000 Australia

ISBN 978-1-74217-456-3 (print)  
ISBN 978-1-74217-457-0 (online)

**Disclaimer** This publication may be of assistance to you but the State of Victoria and its employees do not guarantee that the publication is without flaw of any kind or is wholly appropriate for your particular purposes and therefore disclaims all liability for any error, loss or other consequence which may arise from you relying on any information in this publication.

If you would like to receive this information/publication in an accessible format (such as large print or audio) please call the Customer Service Centre on: 136 186, TTY: 1800 122 969, or email [customer.service@dpi.vic.gov.au](mailto:customer.service@dpi.vic.gov.au)