

# Vegetable ~~Matters of~~ Facts

Based on research funded by the vegetable growers levy,  
Horticulture Australia and the Department of Primary Industries-Victoria

Number 28  
October  
2005



## Lettuce Aphid identification

### Identification of Lettuce Aphid (*Nasonovia ribis-nigri*)

The first step in managing lettuce aphid is positive Id. There are several aphid species commonly found in lettuce crops. Some of them look very similar to the lettuce aphid.

These keys and images will help you to identify the lettuce aphid. The monitoring/trapping requirements are the precursor for Lettuce Aphid on farm for interstate market access.

### Biology

Aphids are a highly successful group mainly because of their ability to reproduce at a high rate. This is due to;

- embryonic development without fertilisation by the male;
- ability to produce live young;
- presence of different forms enabling division of labour. Some forms concentrate on reproduction with other (winged forms) specialising in dispersal.



Lettuce aphid (*Nasonovia ribis-nigri*)



Potato aphids



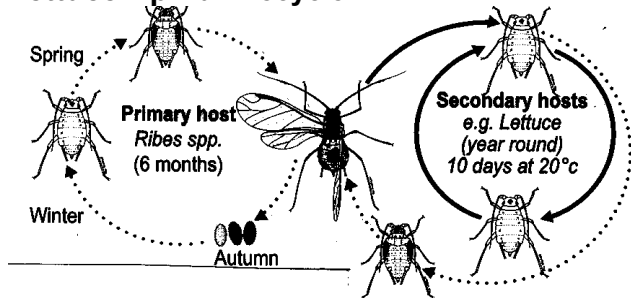
Lettuce aphid (wingless)



Green Peach Aphid (*Myzus persicae*)

# Lettuce

## Lettuce Aphid Lifecycle



## Generalised Lifecycle

**Autumn** – Sexual females & males are produced

**Winter** – Fertilised eggs overwinter.

**Spring**- Fundatrix (first generation female) hatches from eggs

**Spring-Summer**- Production of parthenogenetic, females (may be winged or wingless). Winged forms disperse to other host plants

Winged forms develop in response to;

- increased body contact resulting from crowding, or,
- reduced plant quality

## Description:

Medium sized, usually green but sometimes yellow to red.

**Wingless adults (Apterae):** More uniformly green to yellowish-green. Dark brown stripes on upper abdomen. Siphunculi (see diagram) are usually green tipped with dark-green or black.

**Winged adult (Alate):** darker than non-winged adults. Upper thorax, head and siphunculi black. Black striped on upper abdomen.

**Nymphs:** No abdominal stripes, difficult to accurately identify.

## Monitoring and Trapping for Lettuce Aphid

**Monitoring**  
Monitoring is the key – this is critical, frequent monitoring will allow the grower to assess pest pressure in the crop. At the same time, monitor for other pests and beneficials.

### Destructive Sampling

- Sample a minimum of 100 lettuce plants per field (select head lettuce crops as a priority).
- Sample lettuce heads remaining from the previous harvest, as a first priority.

### Sticky Traps (yellow or blue)

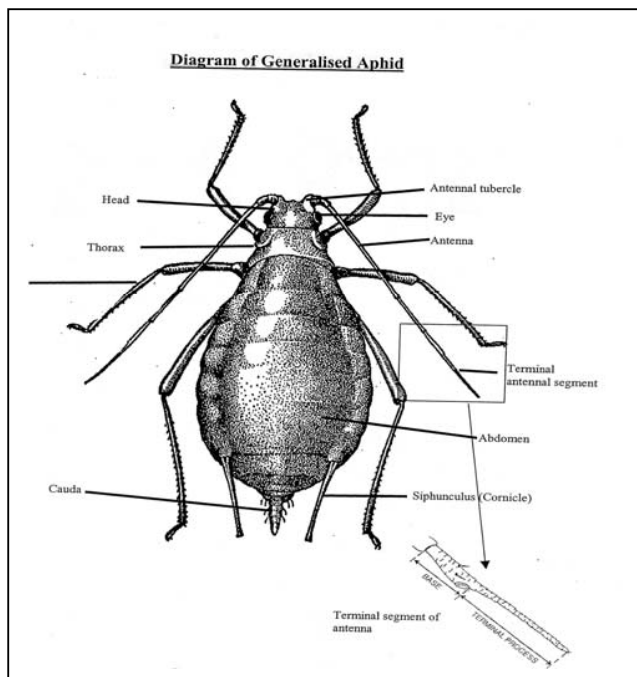
These can also be used to monitor crops for aphids.

- Sticky traps (10x20cm) with adhesive on both sides of the trap are used,
- 1 trap/ 4 ha of lettuce per planting per farm, with a minimum of 6 traps per farm is required.
- Traps should be suspended about 10cm above the crop or plant foliage, and face any prevailing winds. The traps should be adequately secured to prevent them from becoming dislodged. They should be placed in production areas, and around the perimeter of the property.

## Equipment Needed for Monitoring

- Hand lens or magnified visor (X20 power)
- Paint brush (for collection of small insects )
- Specimen vials (for collection of unidentified insects)
- Sample bags (for specimens of disease, or weeds)
- Crop monitoring sheet, clipboard & pen
- Sticky traps for monitoring flying insects, pests & beneficials

Diagram of Generalised Aphid



For up-to-date information on Interstate Restrictions and Certification Requirements for the Interstate Movement of Hosts of Lettuce Aphid please contact DPI Plant Standards Branch on 9210 9390

## Are you on our mailing list?

If you would like to receive your own copy of **Vegetable Matters-of-Facts** or have changed your address, please contact: Rob Dimsey 03 5152 0600

## Check us out and view our other fact sheets:

<http://www.dpi.vic.gov.au/agvic/ihd/projects/vchq.htm>

## For more information please contact your local VegCheque officer :

Neville Fernando	Gippsland	5624 2267
Sally-Ann Henderson	Northern Vic	5051 4500
Bruce Fry	South West Vic	5233 5510
Elizabeth Wharton	South West Vic	5233 5504
Slobodan Vujovic	Melbourne	9210 9297

Vegetable Matters-of-Fact is published as part of DPI's VegCheque extension program.

Editor: Rob Dimsey T: 03 5152 0600

Disclaimer: This publication may be of assistance to you but the state of Victoria and its employees do not guarantee that the publication is without flaw of any kind or is wholly appropriate for your particular purpose and therefore disclaims all liability for any error, loss or other consequences which may arise from you relying on any information in this publication.

□ The State of Victoria, Department of Primary Industries, 2005.

ISSN: 1445-5676